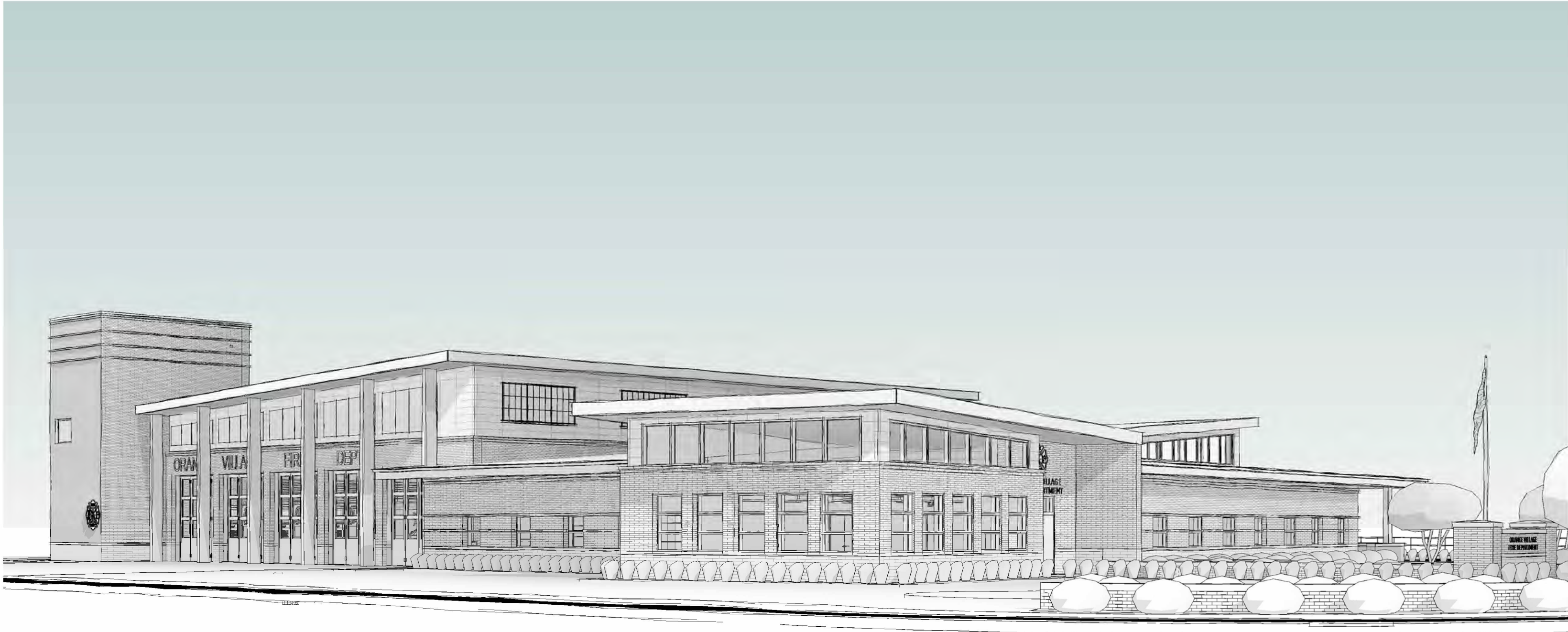


New Fire Station Headquarters For:

The Village of Orange



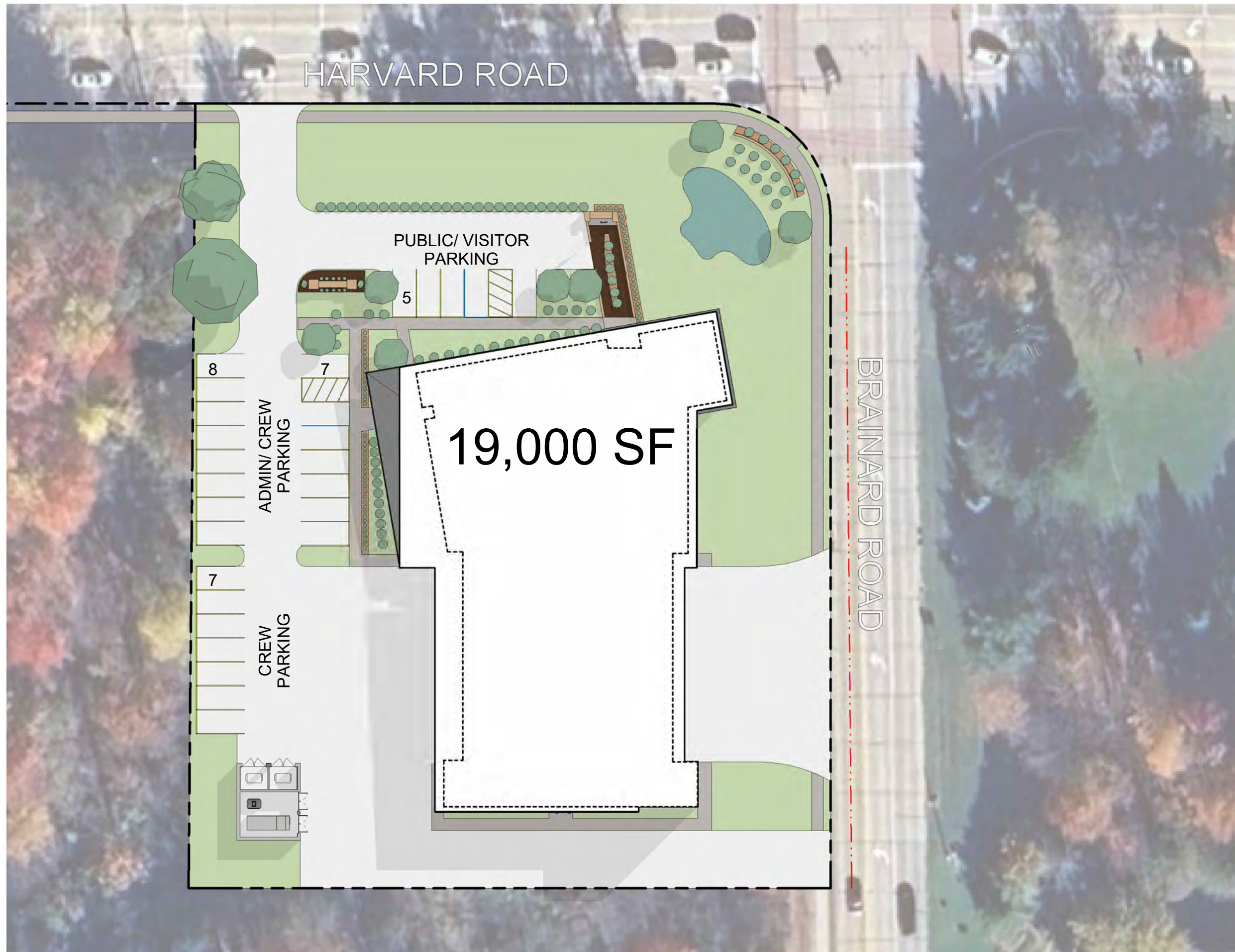
New Fire Station Headquarters For:

The Village of Orange
Title Sheet

3/12/2026



© Copyright 2023 DS Architecture, LLC. All rights reserved.



New Fire Station Headquarters For:

The Village of Orange
Schematic Site Plan

3/12/2026



- Hot Zone
- Transition
- Clean Zone
- Decompression

Project Goals

1. Privacy for Day Room & Fitness
2. Opportunity for covered outdoor space
3. Training Room Prominence on corner
4. Public Entry Access
5. Separation for crew parking
6. Decon Process

Listen: Through early conversations with Village leadership and Fire Department personnel, three critical priorities emerged that shaped the design direction for the project.

Operational Readiness

The station must support fast, efficient response while accommodating modern fire apparatus, equipment, and training needs. The organization of the building begins with the apparatus bays and operational spaces that allow crews to move quickly from living areas to response.

Health and Wellness

Firefighters spend extended shifts at the station, making wellness an essential part of the design. The facility incorporates modern decontamination practices, fitness spaces, and comfortable living environments that support both physical and mental readiness.

Civic Presence

Located at a prominent intersection within the Village, the fire station should represent the community it serves. The building must be welcoming and visible to the public while maintaining the operational efficiency required for emergency response.

Lead: With these priorities established, the design team translated them into a clear organizational strategy for the building and site.

Operational functions form the backbone of the facility. The apparatus bays anchor the building and are directly supported by turnout gear storage, equipment rooms, and decontamination spaces. Living quarters and crew support areas are positioned to provide comfort and privacy while maintaining immediate access to response areas. Public facing spaces such as the training room and entry sequence help establish a civic presence along the street and reinforce the building's role as an important public facility within Orange Village. This approach allows the building to operate efficiently while presenting a welcoming and dignified identity to the community.

Innovate: Several design strategies elevate the project beyond basic functional requirements and help define the architectural character of the station.

Public and Private Balance

The building clearly distinguishes between civic and operational spaces. Public areas, including the training room and entry sequence, are visible and accessible from the street, reinforcing the department's connection to the community. Operational and crew areas remain secure and controlled behind this civic frontage.

Private Outdoor Living Spaces

Outdoor patios connected to the day room and fitness area create opportunities for physical training, recovery, and informal gathering. These spaces are intentionally located along the side of the building where they are protected from the street and provide a sense of privacy for firefighters during their shifts.



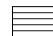



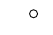



Residential Scale with Civic Presence

Although the building must accommodate the large volumes required for modern apparatus bays and training facilities, its massing is carefully articulated to fit within the residential scale of the surrounding neighborhood. Changes in rooflines, materials, and building volumes help the station feel appropriate to its context while still expressing the strength and permanence expected of a public safety facility.



New Fire Station Headquarters For:
 The Village of Orange
 Schematic Floor Plan



-  Acoustic Ceiling Tile, ACT-1
-  Gypsum Ceiling, GYP-1
-  Open to Above
-  Felt Ceiling Cloud, FC-1
-  Suspended Linear LED, LED-1
-  Recessed 2x2 LED, LED-2
-  Recessed LED Can, R-1
-  LED Pendant, P-1
-  Decorative Pendant, P-2
-  Decorative Pendant, P-3

1 First Floor Reflected Ceiling Plan
1/8" = 1'-0"

New Fire Station Headquarters For:
The Village of Orange
Reflected Ceiling Plan

© Copyright 2023 DS Architecture, LLC. All rights reserved.



SD0.04

DS ARCHITECTURE



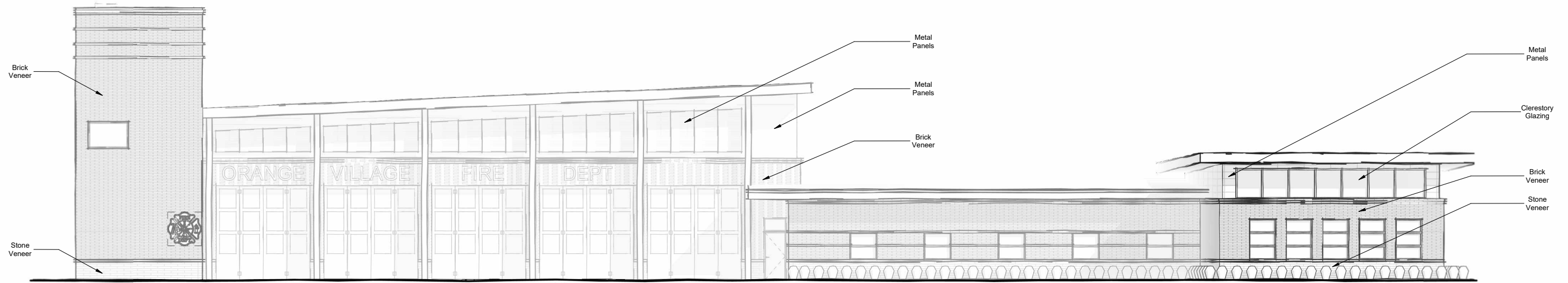
- Concrete
- LVT
- Ceramic Tile
- Carpet (CPT-1)
- Carpet (CPT-2)
- Walk Off Mat
- Rubber Flooring
- Rug

New Fire Station Headquarters For:
 The Village of Orange
 Finish Plan



© Copyright 2023 DS Architecture, LLC. All rights reserved.

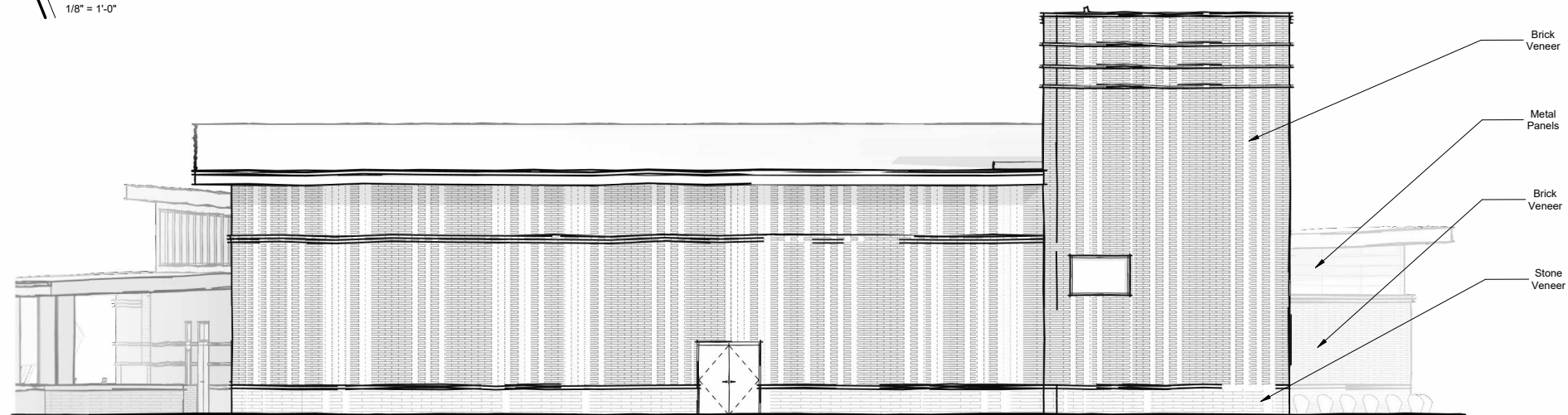
3/12/2026



3 Elevation 1
1/8" = 1'-0"



2 Elevation 3
1/8" = 1'-0"

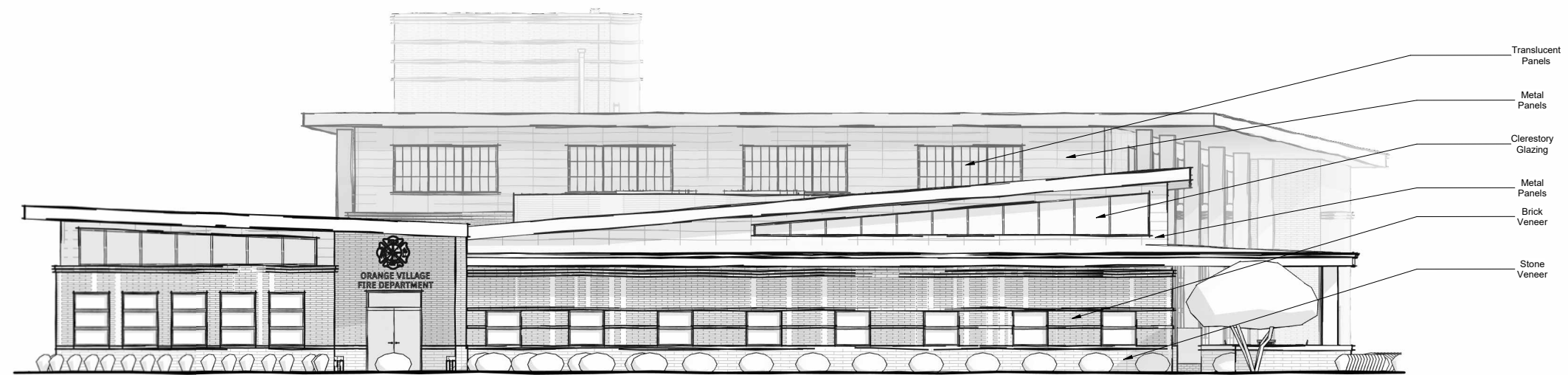


1 Elevation 2
1/8" = 1'-0"

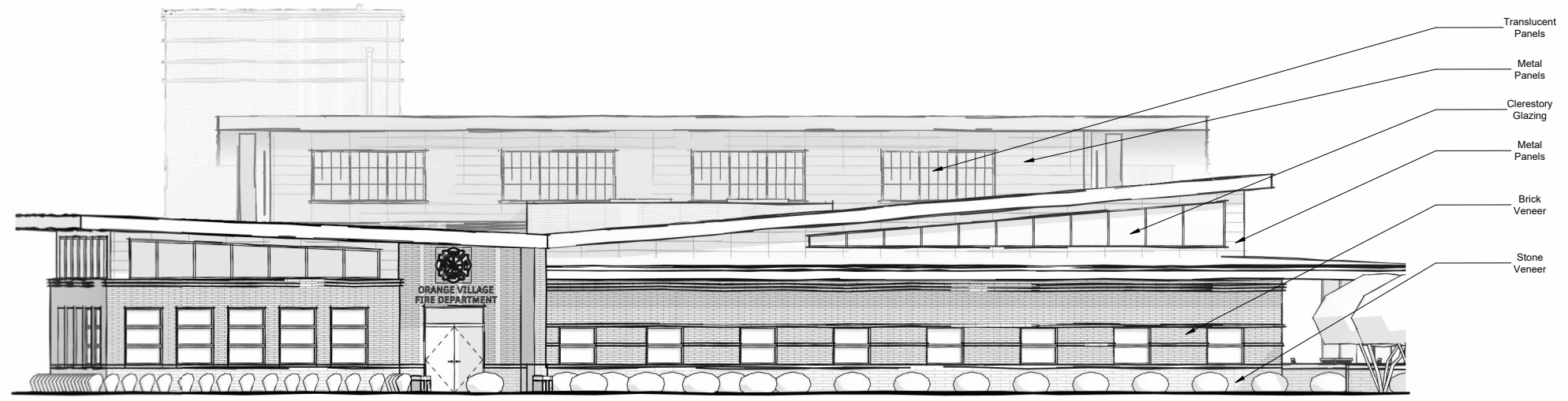
New Fire Station Headquarters For:
The Village of Orange
Exterior Elevations



6 Elevation 6
1/8" = 1'-0"

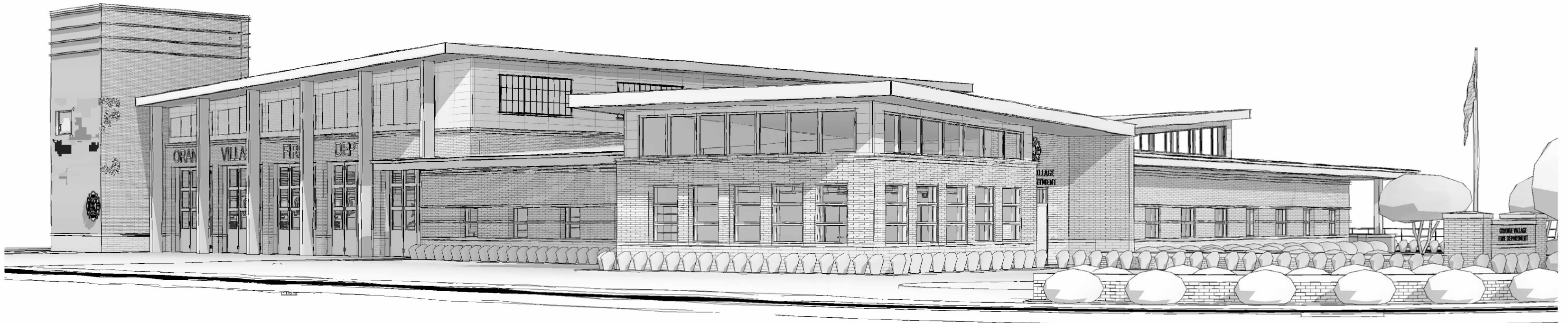
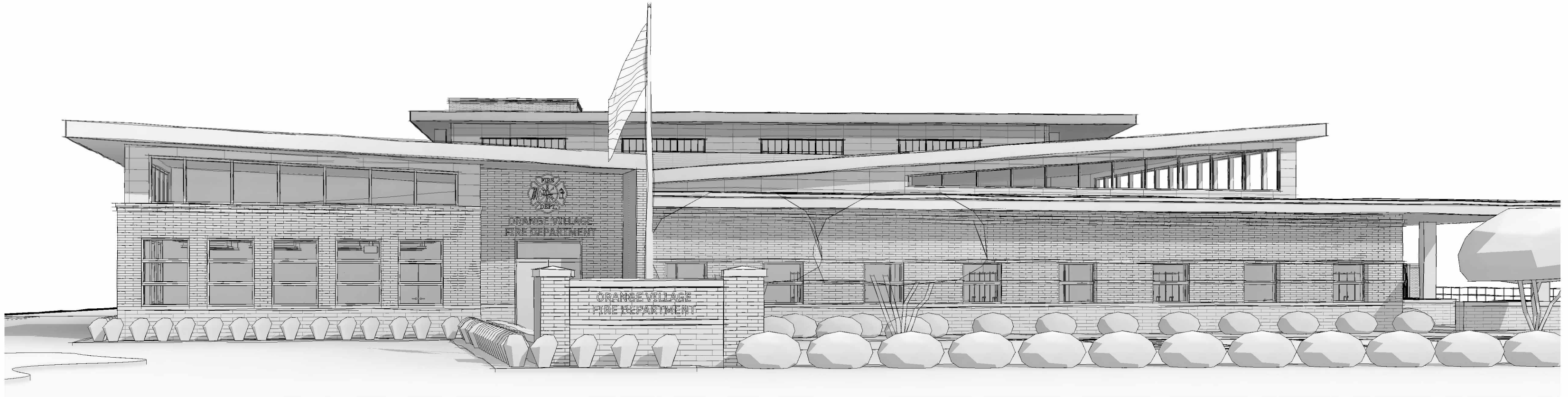


5 Elevation 5
1/8" = 1'-0"

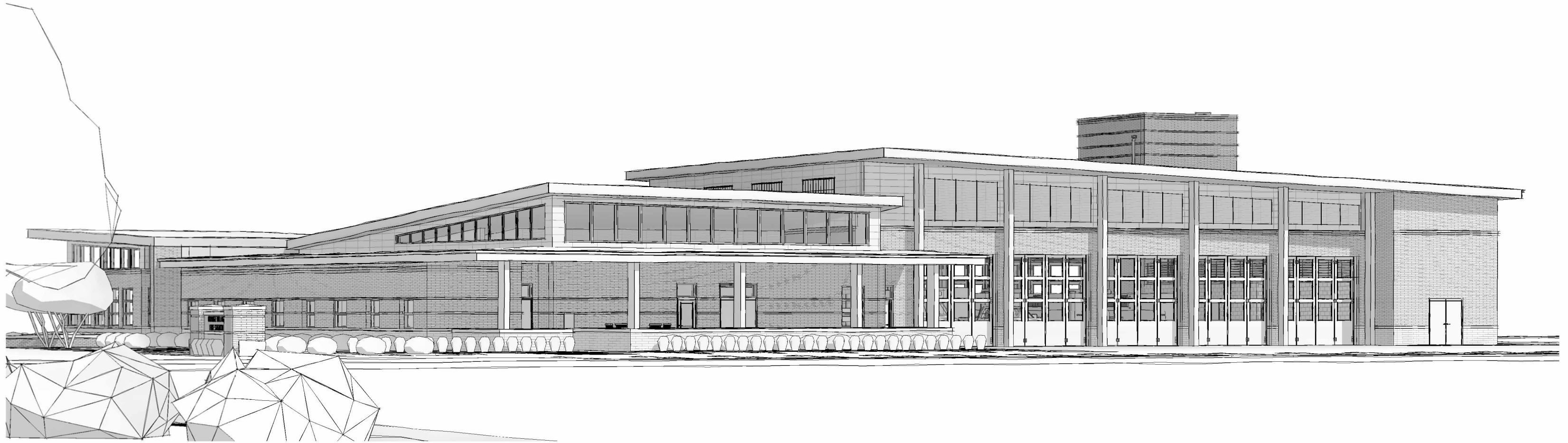


4 Elevation 4
1/8" = 1'-0"

New Fire Station Headquarters For:
The Village of Orange
Exterior Elevations



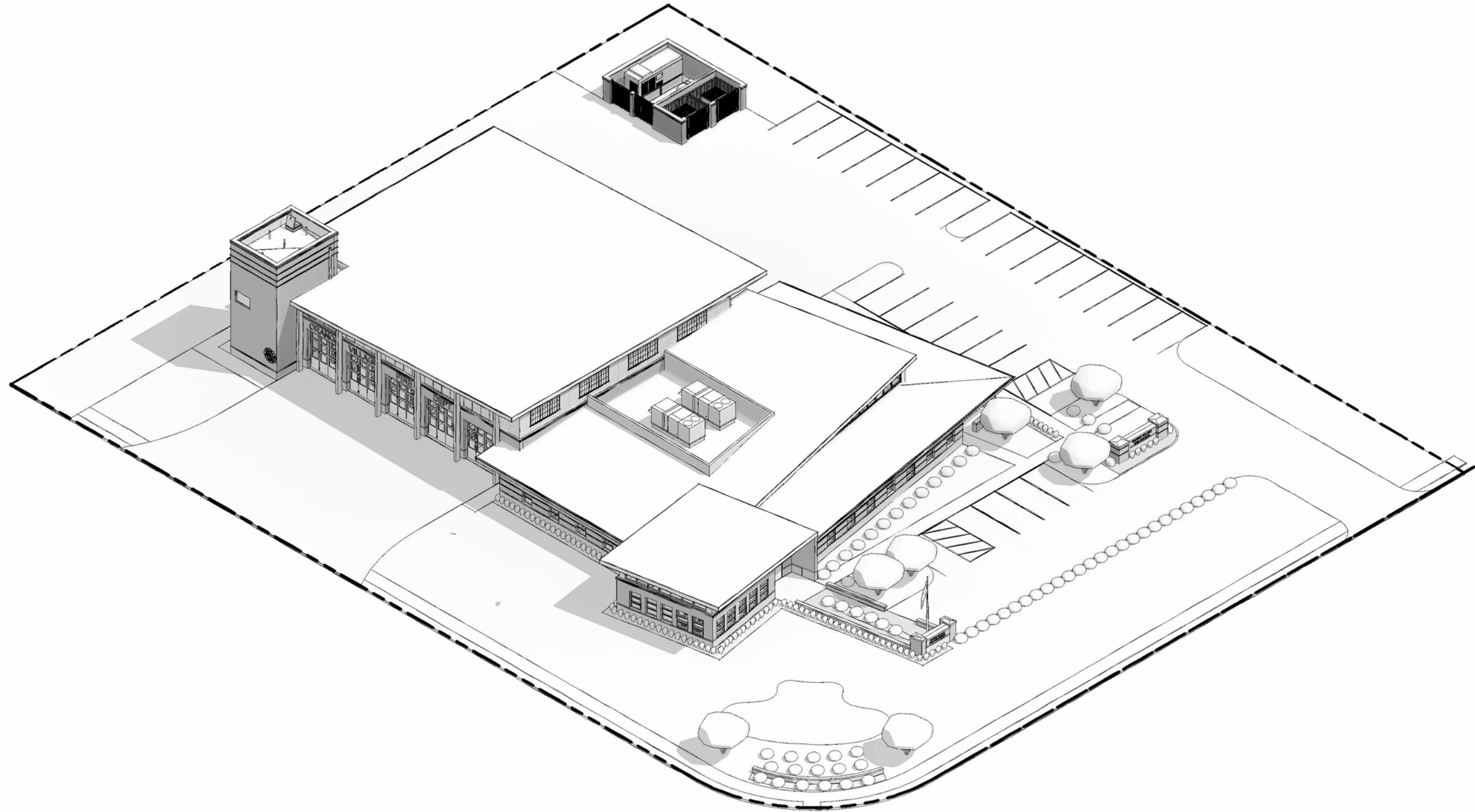
New Fire Station Headquarters For:
The Village of Orange
Exterior Perspectives



New Fire Station Headquarters For:
The Village of Orange
Exterior Perspectives

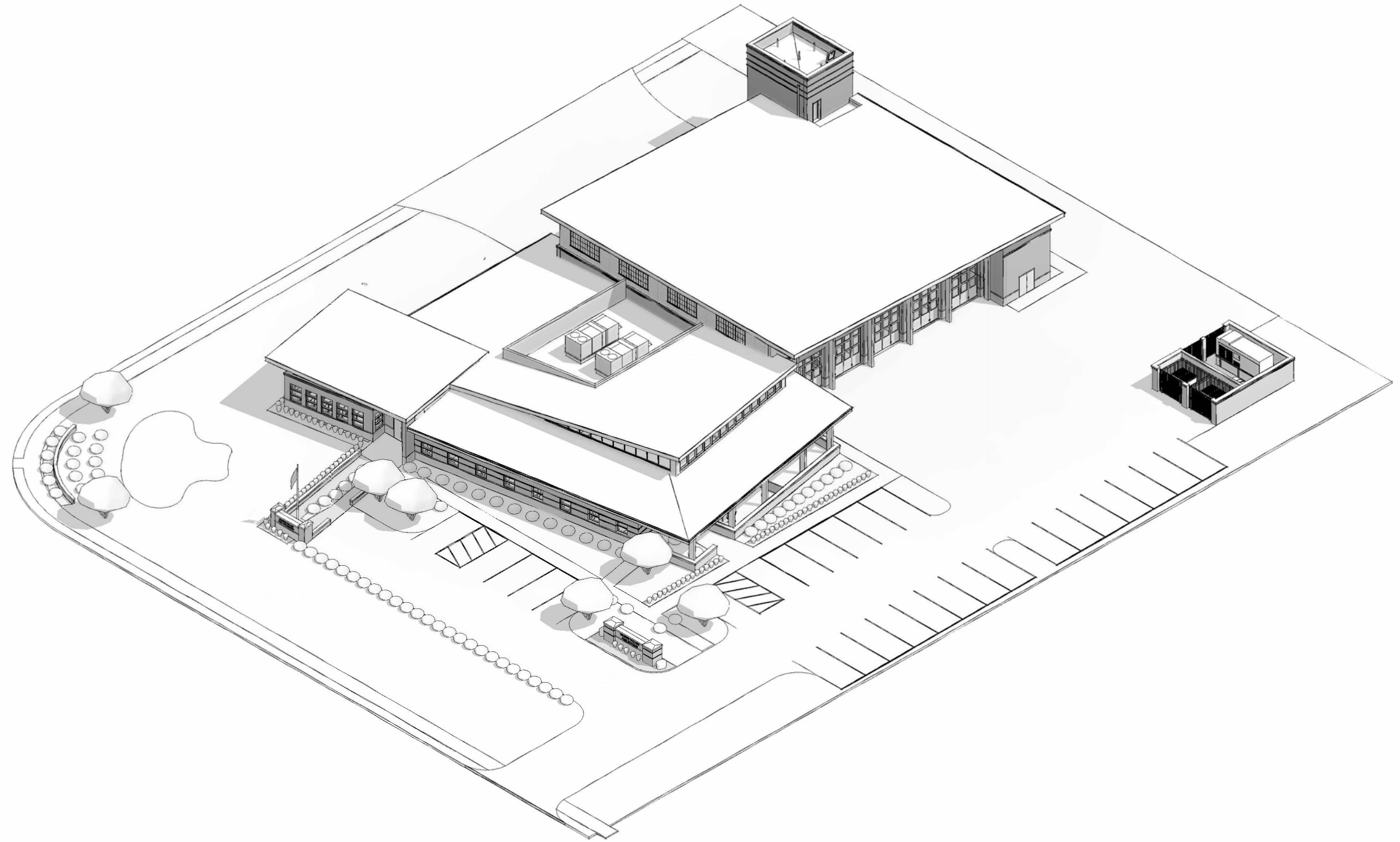
3/12/2026





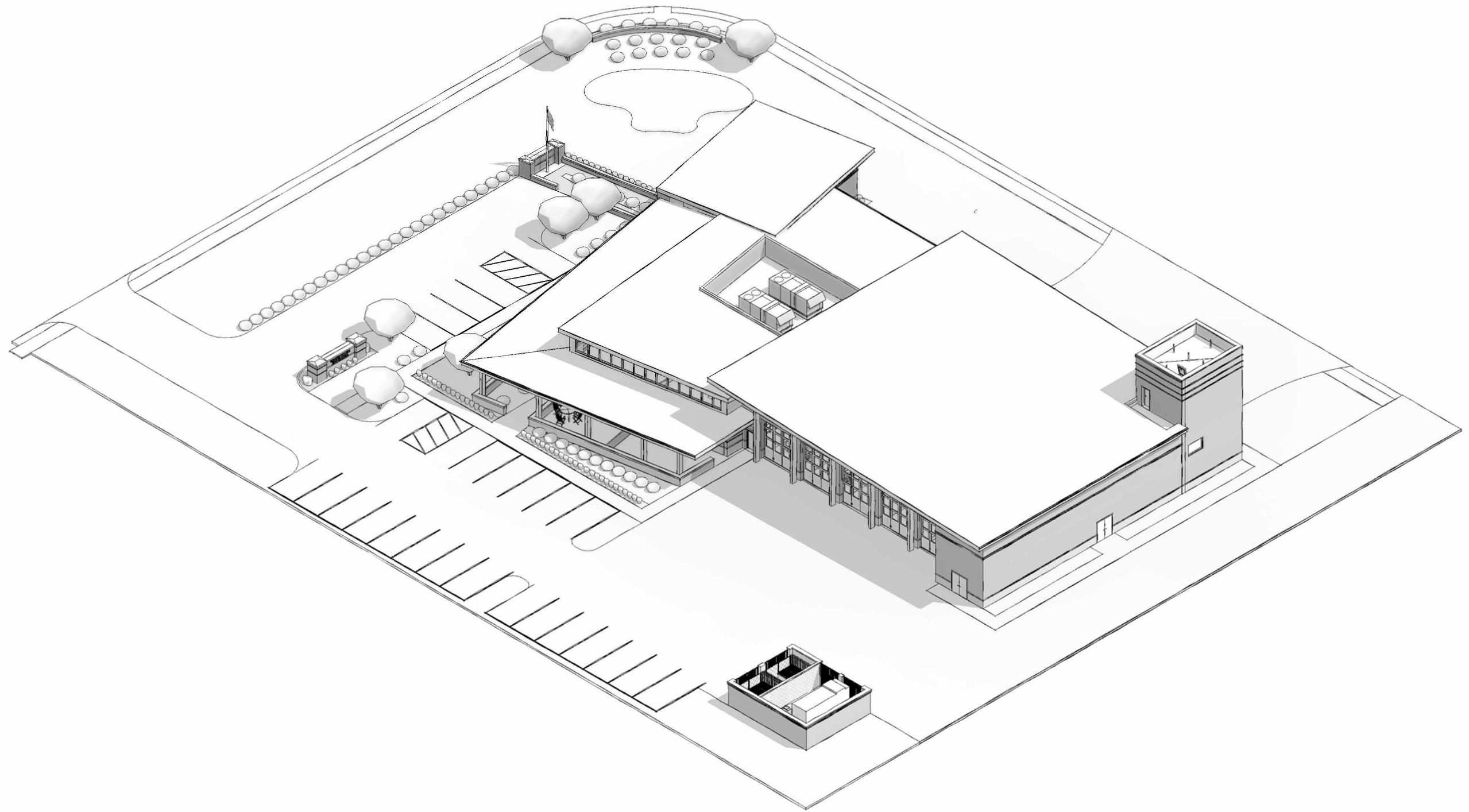
New Fire Station Headquarters For:
The Village of Orange
Isometric North East

3/12/2026



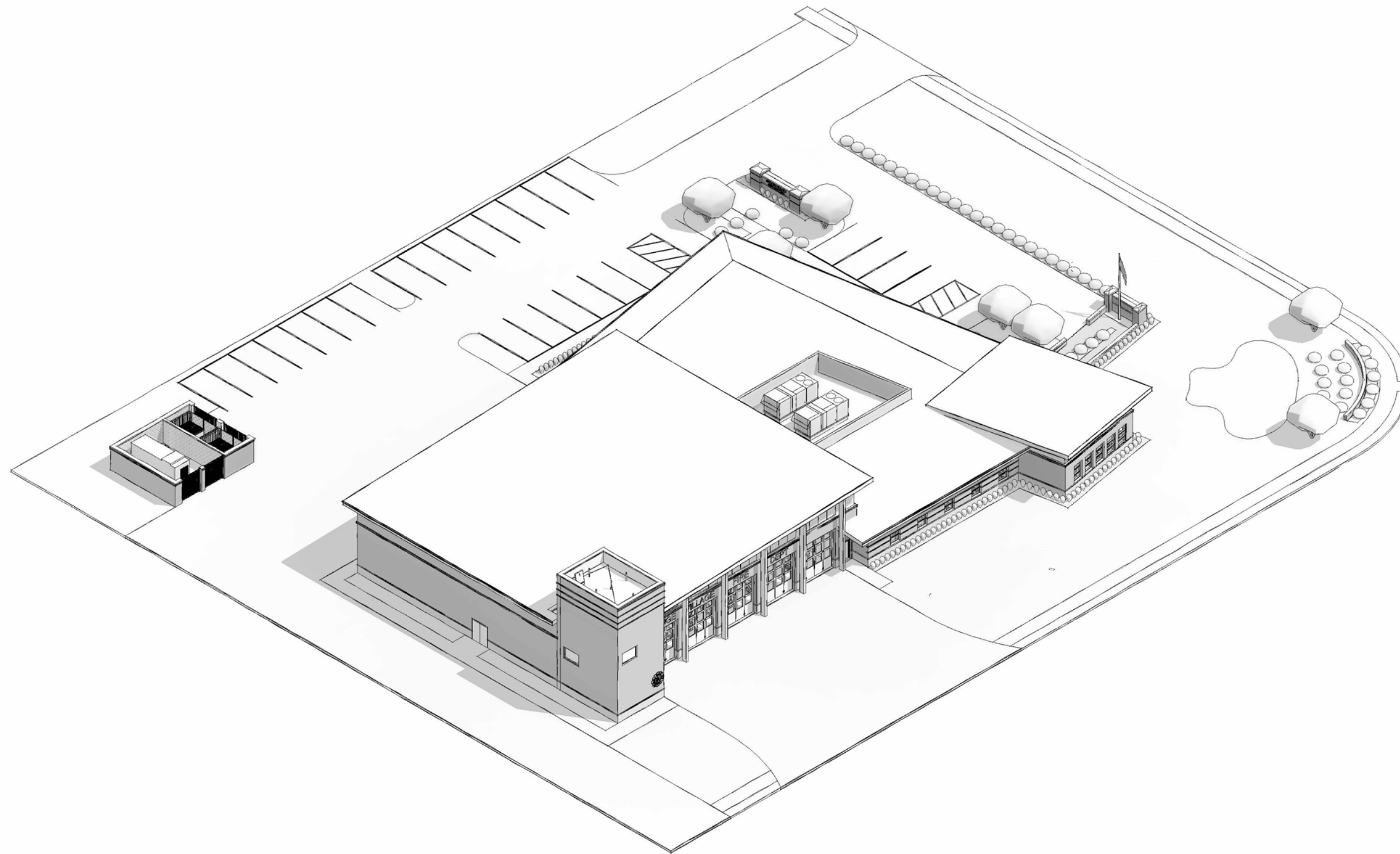
New Fire Station Headquarters For:
The Village of Orange
Isometric North West

3/12/2026



New Fire Station Headquarters For:
The Village of Orange
Isometric South West

3/12/2026



New Fire Station Headquarters For:

The Village of Orange
Isometric South East

3/12/2026