

YOUR PROJECT TEAM LEADERS



SENIOR MANAGEMENT LEAD
Jeff Meyers
 AIA, NCARB, LEED AP BD+C
 Public Safety/Civic Arch Studio Director
 20 Yrs Public Safety &
 Civic Architecture Experience
DS Architecture



PROJECT DESIGN LEAD
Eric Pros
 New Dad, AIA, NCARB, CPD
 Speaker at Public Safety
 Design Conferences
 10 Yrs Public Safety Experience
DS Architecture



PUBLIC SAFETY SPECIALIST
Vaughan Miller
 Assoc. AIA, Deputy Fire Chief (ret),
 Type 1 Incident Commander, CPD
 30 Yrs Fire Department
 Leadership Experience
K2M Design



ENGINEERING LEAD
Mark Wutz
 PE, CEM, CPMP, LEED AP,
 CDSM, CPM
 30 Yrs Engineering/
 Systems Experience
K2M Design

We design for communities.

Public facilities belong to the community. Our projects for public entities reflect our dedication to designing buildings that invite and welcome the citizens they serve and that protect and support those who work in them.

Engaging all critical parties in the process of design produces a building that works and that is a source of community pride. Our studio team leads this collaboration and guides the process with expertise and confidence that is grown from experience.

DS Architecture has had the opportunity to be involved with the design and/or feasibility study/assessment of numerous civic buildings and fire & police stations. Some recent examples are shown below (many in tandem with K2M):



We listen. We encourage the sharing of information, ideas and goals. This collection of input at the outset of the process lays groundwork for a solution that best meets the budget, schedule, form and functional needs.

We lead. We guide discussion and promote collaboration between all team members to generate the best possible solution.

We Innovate. Every project is unique. Reaching the optimal solution for each requires a team committed to studying, assessing and developing the most efficient and enduring design.

SCOPE OF WORK MATRIX & SCHEDULE

Project Commencement		09.15.25 - 09.22.25 (1 Week)
1	Receive contract	
2	Determine available project funds (hard costs and soft cost) and project parameters	
3	Confirm scope and intent with the Village	
4	Identify stakeholders with the Village	
5	Site Due Diligence - Start Modeling Existing Conditions	
6	Walkthrough of Existing Village Hall and Safety Buildings	
Visioning		09.22.25 - 10.06.25 (2 Weeks)
1	Facilitate a visioning session to identify, discuss, and prioritize values and goals	
2	Supply written evaluation of values and goals	
3	Review values and goals report with the Village	
4	Review with the Village the image, efficiencies, functionality, cost and schedule	
5	Review intended use of the programming documents and services with the Village	
6	Identify and evaluate the constraints and opportunities	
Operational Needs Assessment		10.06.25 - 10.20.25 (2 Weeks)
1	Discuss and confirm nationally recognized standards	
2	Conduct interviews with the Village stakeholders and Key Fire & Police Department representatives	
3	Conduct work session to review information obtained	
4	Develop performance and design criteria for proposed facility	
5	Preliminary determination of space requirements, space relationships etc....	
6	Identify any major unresolved programming	
7	Determine relationship and adjacencies of spaces	
8	Provide preliminary opinion of the cost of the program	
Initial Conceptual Design		10.20.25 - 11.12.25 (3 Weeks)
1	Prepare initial report and meet with the Village to review table of contents, key considerations	
2	Recommend project standards, identify building codes, accessibility requirements, sustainability goals, etc.	
3	Prepare options analysis for short and long-term strategies	
4	Preliminary Design	
5	Ideal site plan(s)	
6	Preliminary floor plan(s)	
7	Preliminary exterior elevations	
8	Rendering	
9	Present initial report to participants and others	
10	Submit Initial Report and obtain the Village approval	
Final Conceptual Design		11.12.25 - 12.10.25 (4 Weeks)
1	Prepare final program document	
2	Executive summary	
3	Methodology of program	
4	Conclusions from data analysis	
5	Space program by functions and size	
6	Develop implementation schedule	
7	Provide preliminary opinion of the cost of the program	
8	Final Report and Presentations to Stakeholders	
Cuyahoga County Primary Election Process		12.10.25 - 02.05.26 (8 Weeks)
1	Council Approve Ballot Language	
2	Submit Documentation to Cuyahoga County Board of Elections (DUE 02.05.2026)	

CRITICAL SUCCESS FACTORS

The DS Architecture Team is a collaborative design team that shapes a highly participatory process bringing the best strengths of our entire project team to the Orange Village community. Our team brings energy throughout the course of your project that engages stakeholders, fosters thoughtful sensible design, and brings the very best we have to offer during each stage of the project. Our approach is intended to foster forward-thinking solutions to benefit the community and all users.



POLICE | ADMINISTRATION

PUBLIC | PRIVATE DEFINITION

The building must balance its civic role with secure police functions. A centralized entry connects public spaces and administration, while a new reception window within the secure vestibule provides safe, controlled access for police interactions.

SECURE EXTERIOR OPENINGS

Transparency benefits civic uses but creates risks for police operations. Re-envisioning glazing strategies with opaque surfaces at eye level and selective secure glazing will provide privacy while maintaining natural light.

SECURE PERIMETER SAFETY & PRIVACY

Holding cells require sight and sound separation, and interview rooms must ensure acoustic and visual privacy. Proper planning will maintain safety and protect confidentiality throughout the secure perimeter.

CHAIN OF CUSTODY

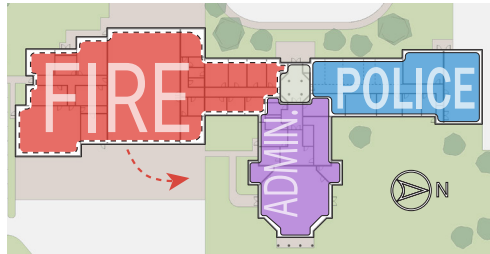
The converted cruiser garage will centralize intake for evidence and detainees. Secure lockers, camera monitoring, and controlled circulation will ensure evidence handling aligns with CALEA standards.

DIGNITY & OPERATIONAL EFFICIENCY

A professional, efficient environment enhances staff performance and reinforces the dignity of law enforcement. Contemporary, functional spaces will support the department's modern operations.

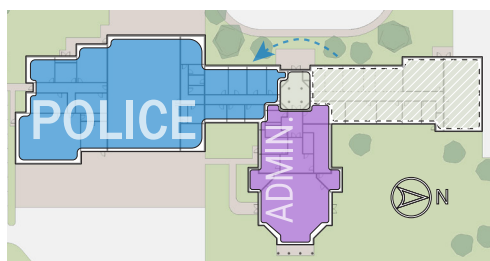
PHASE 1:

The fire department relocates to its newly constructed standalone station, freeing up its current space within the municipal complex. This move ensures uninterrupted emergency response operations while setting the stage for the next phase of renovations.



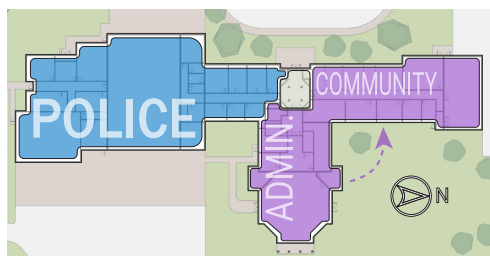
PHASE 2:

The vacated fire space is retrofitted to accommodate the police department's needs. This includes creating secure areas, evidence processing facilities, and appropriately designed holding and interview spaces, improving safety and efficiency for police operations.



PHASE 3:

With the police relocated, the remaining admin and community spaces are renovated and modernized. Upgrades improve accessibility, functionality, and community engagement, resulting in a more efficient and welcoming municipal center.



FIRE

SAFETY & SECURITY

Careful zone design separates hazardous areas such as the apparatus bay and sally port from the living quarters, ensuring the health and safety of firefighters. Direct exhaust capture systems and containment strategies further reduce exposure to diesel fumes, carcinogens, and other harmful substances.

HEALTH & WELLNESS

The design provides a range of spaces that balance privacy with opportunities for connection, supporting mental wellness and long-term resiliency. Dayrooms and dining areas act as social hubs for camaraderie, while quiet spaces allow first responders to decompress after stressful calls.

SITE DESIGN

The site layout prioritizes safe, efficient circulation with rapid emergency response at its core. Pull-through apparatus bays, dedicated staff parking, and clear public entry points create a functional campus that accommodates operations without compromising public safety.

STAND-ALONE FACILITY

The new fire station functions independently, allowing the department to meet all modern operational needs within a secure, purpose-built facility. Shared workspaces encourage efficiency and collaboration, while private dorms and carefully controlled access protect privacy and well-being.

PUBLIC | PRIVATE SEPARATION

Public and private uses are carefully distinguished through a centralized entry and clear circulation path. Visitors access training and community spaces without crossing into secure areas, ensuring safety while still fostering positive public engagement.

CONTEXTUAL DESIGN

Set at a prominent intersection, the station complements the Western Reserve style of the village hall while establishing its own civic presence. Anchored by a visible hose tower and public entry, the design creates a landmark that represents both community pride and forward-looking growth.

