



ABOUT BOWEN

With over 50 years of public safety design, **Bowen has the expertise** needed to guide you through the planning process and beyond.

We understand public safety facilities and their importance to the community. We understand the unique components and relationships that define public safety buildings, and **we know how integral detailed programming is to impactful design.**

Our rigorous programming process develops a comprehensive plan and vision for a re-imagined facility. This process will lay a strong foundation that allows you to plan new public safety facilities that will serve the community.

IN ATTENDANCE



Allan L. Renzi, AIA
President

PUBLIC SAFETY PLANNING

- Wooster Fire Station #1 Feasibility Study
- Nortfield Village Police and Fire Master Plan
- North Canton Police Station and City Hall Renovation
- Berea Police Station



Robyn Wolf, AIA
Director | Civic + Justice

PUBLIC SAFETY PLANNING

- Wooster Fire Station #1 Feasibility Study
- Nortfield Village Police and Fire Master Plan
- North Canton Police Station and City Hall Renovation
- Berea Police Station



Julia Weiss, AIA, LEED AP
Sr. Project Architect

PUBLIC SAFETY PLANNING

- North Canton Police Station and City Hall Renovation
- Berea Police Station
- Willoughby Police Station Fit Plan

EXPERTISE

DESIGNALOGUES
volume 01 episode 01

Design & Justice

Step into the heart of civic design as two passionate professionals share how architecture can uplift communities, champion justice, and create spaces that serve everyone.

Virtual Event
Zoom

Tuesday, 26th August
Start at 12PM to 1PM

Benefit:
• 1 LU
• Hear how women are leading change through civic design

ROBYN WOLF ARCHITECT, AIA
JULIA WEISS ARCHITECT, AIA

REGISTRATION www.aiacleveland.com



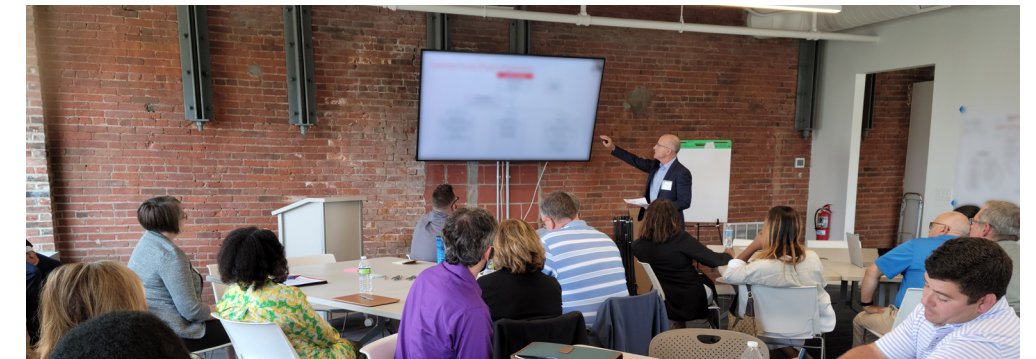
Bowen + Redstone team members are all experts in their respective fields. They have all been asked to present on multiple occasions at industry events and provide consulting for official code regulations.

Conferences

- Ohio Association of Chiefs of Police
- Design & Justice Designalogues
- AIA Academy of Architecture for Justice
- IACP Annual Conf. and Exposition

Authorship

- Chapter 28 - Fire Station and Facility Design – 7th Edition of the Fire Chiefs Handbook
- IACP's Planning Facilities Planning Guidelines



EXPERIENCE



Willoughby Police Station



Wooster Safety Service Center



Fire Station No. 36



White Lake Township Public Safety Bldg



Monroe Fire Station



Sandusky Justice Center

FIRE STATION PLANNING PARTNER



REDSTONE ARCHITECTS, INC.

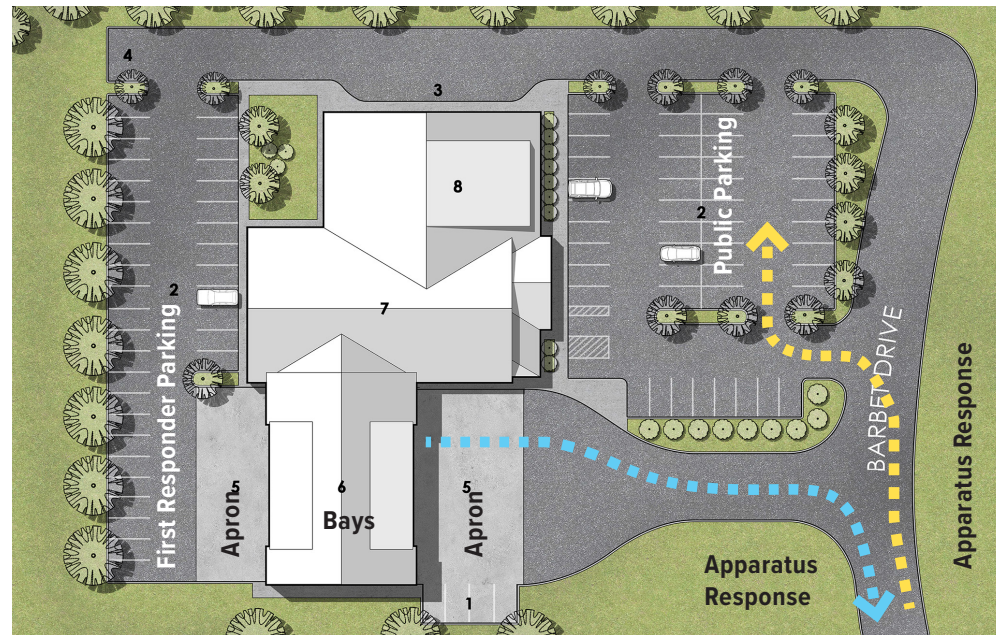
Fire Station Expert

For more than 85 years, Redstone Architects has understood the importance of providing design solutions that embrace functionality and client needs, as well as pleasing and appropriate aesthetics. They assist local architects and municipalities as subject matter experts in the planning and design of fire station and public safety facilities throughout the United States. **By being a consultant to a local architect, local firms can continue to serve their community on specialized projects by augmenting their knowledge and use of local engineering consultants with their specialized expertise.**

DESIGN DRIVERS

SITE DRIVERS

- Secure vs. public access
- Response times
- Visibility
- Apparatus and pedestrian traffic
- Grading
- Parking Zones
- Apron Dimensions + Clearances
- Utilities
- Fueling
- Paving
- Direct access to evidence collection
- Sallyport



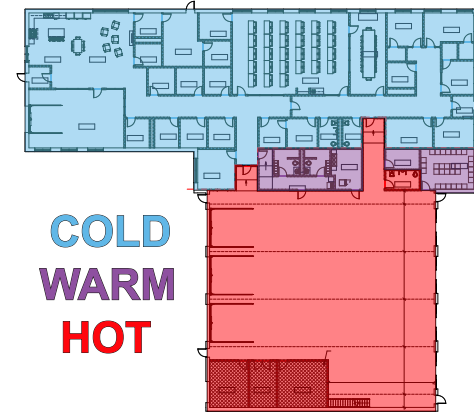
STORM SHELTER

The Bowen team has designed a half dozen storm/tornado shelters in compliance with ICC 500. We have had success integrating the shelter with other building components, such as lockers rooms.

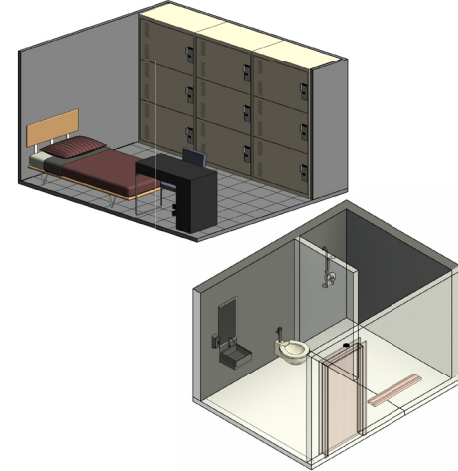


FIRE DRIVERS

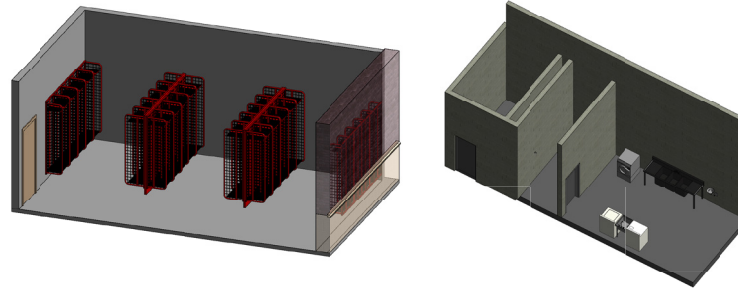
Hot Zone Design Approach



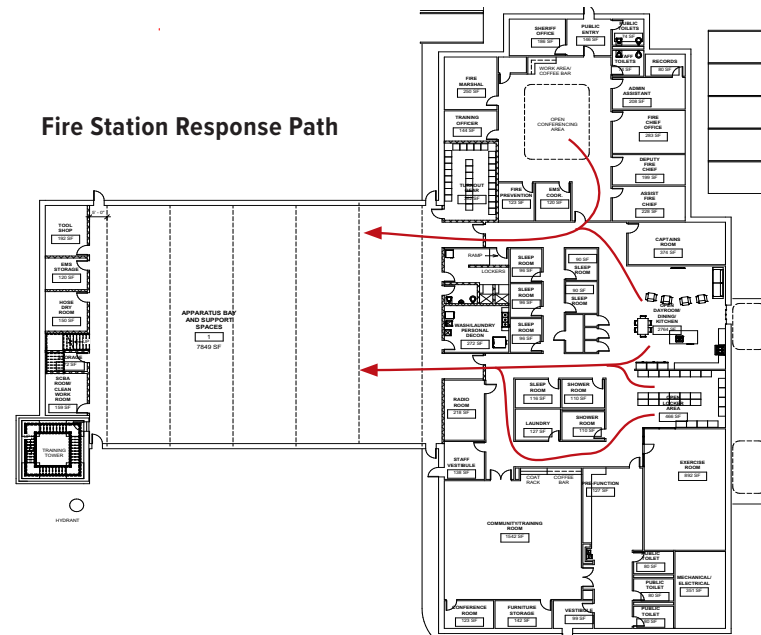
Dormitories and Locker Rooms



Turnout Gear / Personal Decon



Fire Station Response Path



POLICE DRIVERS

Lobby / Secure Counters



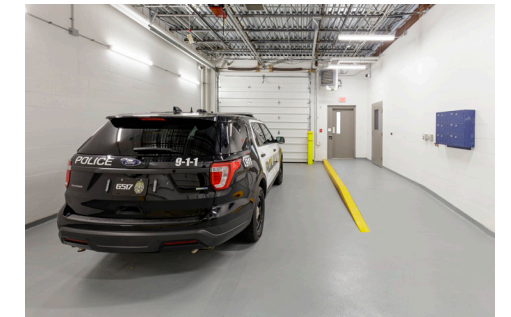
Evidence Storage



Patrol



Sallyport



Locker Rooms



Garage



Training / Community



Break Room

